

LED LIGHTING CONVERSION

Crowley Maritime Corporation
Port Everglades Facility -
Fort Lauderdale, FL



ENERGY SAVINGS

80% Compared to
HID Fixtures

EXISTING WATTAGE USED

26,000W 400 Watt MH
QTY: 65

NEW LED WATTAGE USED

4,968W TLED-C-64-VS-G-WW
QTY: 65

NO MAINTENANCE UP TO

190,000HRS 70% Lumen
Maintenance

THE PROBLEM

Crowley Maritime Corporation provides energy, logistics and maritime solutions for customers worldwide. Based out of Jacksonville, FL, Crowley recently installed a high-resolution security system throughout the warehouse of their Port Everglades facility in Fort Lauderdale, FL. Once in use, it was discovered that the existing 400 watt metal halide fixtures that were used throughout the facility weren't properly illuminating all areas of the warehouse and as a result were creating blind spots on the surveillance footage.

THE SOLUTION

The original 400 watt metal halide fixtures were replaced with 65 **Trace-Lite** LED canopy model TLED-C-64-VS-G-WW. Two (2) model TLED-NFL-79-VS-5K and two (2) model TLED-LVT-4-VS-5K were also added in various locations on site.

The TLED-C-G Series LED canopy luminaire offers the most versatile solution for overhead area illumination. This LED fixture provides multiple housing, lensing and lumen packages solving the need for a variety of lighting applications with just one (1) fixture. Constructed of die-formed and welded aluminum, the TLED series canopy family design has been engineered to provide a LED canopy luminaire that delivers optimum optical performance and lamp longevity in attractive and durable housings with UV-resistant powder coated finishes to protect against the elements and are ETL Listed for Wet Locations.

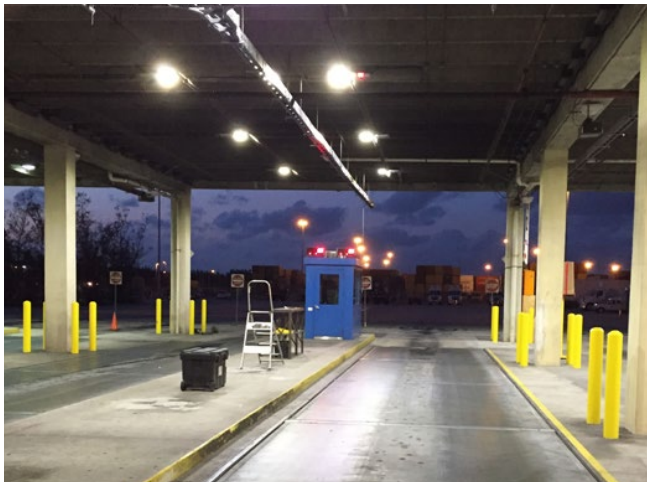
"All too often, decisions are made based on first cost only. At Crowley Maritime Corporation, we include first cost as a component of our analysis, but life cycle cost is the true driver. **Barron Lighting Group** has continually demonstrated through their product and technical support teams, the reason why their products continue to outperform other well-known brands," said Steve Kessler, Director of Global Facilities Engineering at Crowley Maritime Corporation.



PROJECT TECHNOLOGIES

The TLED canopy series has been engineered to deliver optimum optical performance and lamp longevity in a compact, durable housing. This energy saving solution fits a wide spectrum of applications including security lighting, weigh stations, loading docks, office complexes, commercial development, apartments, parking garages, entryways, and stairwells. The TLED canopy series is DesignLights Consortium™ (DLC) qualified and meets or exceeds the efficacy requirements for various rebate programs across the country.

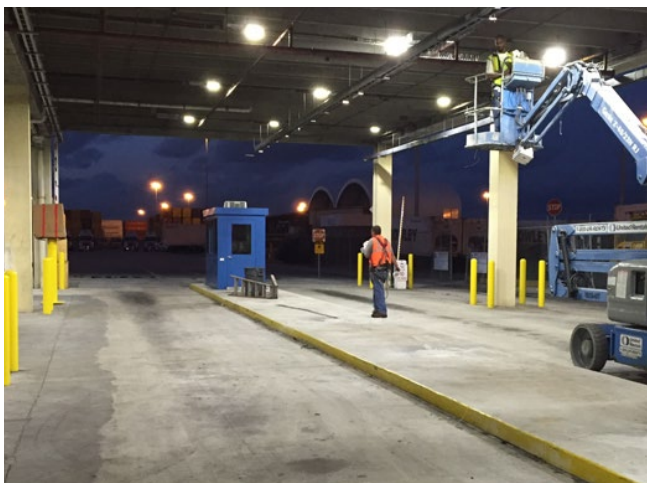
TLED-C-64-VS-G-WW
by **TRACE*LITE**



ADDITIONAL TRACE-LITE PRODUCTS USED ON SITE

The Nyte Forms series of LED luminaires is a versatile family of unique lighting fixtures that can be utilized to satisfy multiple application requirements, from wallpacks to floodlights or inverted for use as a wall washer. The TLED-NFL large LED wallpack is available in 79 watts with 7,669 initial delivered lumens. An optional yoke mount, two (2) inch slipfitter mount or a six (6) inch pole mount arm is also available for floodlighting and area lighting applications.

TLED-NFL-79-VS-5K
by **TRACE*LITE**



The TLED-LVT is a LED Linear Vapor Tight series combining state-of-the-art technology into a robust IP66 Rated vaporproof housing. The LED light engines produce up to 97 lumens per watt. The durability and versatility of the purpose-designed vaporproof housing allows this linear LED vaporproof luminaire to perform in a wide variety of general lighting applications in both indoor and outdoor covered environments.

TLED-LVT-4-VS-5K
by **TRACE*LITE**

