

IMPORTANT SAFEGUARDS READ AND FOLLOW ALL SAFETY INSTRUCTIONS.

When using electrical equipment, basic safety precautions should always be followed including the following:

- **DISCONNECT AC POWER SUPPLY BEFORE SERVICING.**
- Installation and servicing of this equipment should be performed by qualified service personnel only.
- Ensure that the electrical wiring conforms to the National Electrical Code NEC® and local regulations, if applicable.
- Do not mount near gas or electrical heaters.
- Do not use outdoors.
- Do not let power cords touch hot surfaces.
- Equipment should be mounted in locations and at heights where it will not be readily subjected to tampering by unauthorized personnel.
- The use of accessory equipment not recommended by the manufacturer may cause an unsafe condition.
- Any modification or use of non-original components will void the warranty and product liability.
- Do not use this equipment for other than intended use.
- Allow battery to charge for 24 hours or 48 hours before first use for models with one or two batteries, respectively.

SAVE THESE INSTRUCTIONS!

Technical Support ■ (623) 580-8943 ■ technicalsupport@barrontlg.com

VLEDC Series

Installation Instructions

Wall Mount

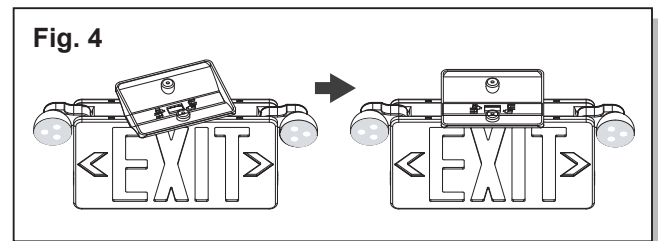
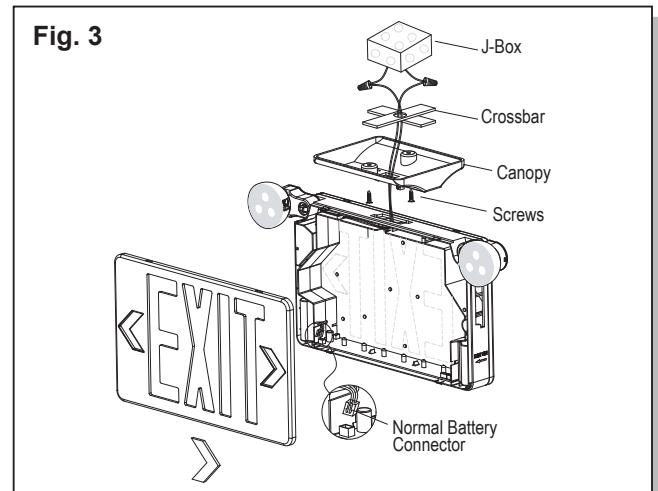
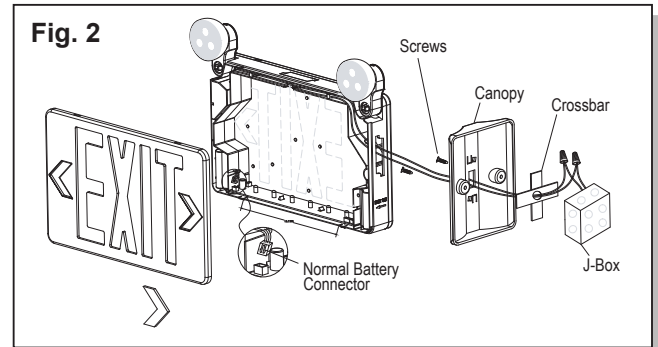
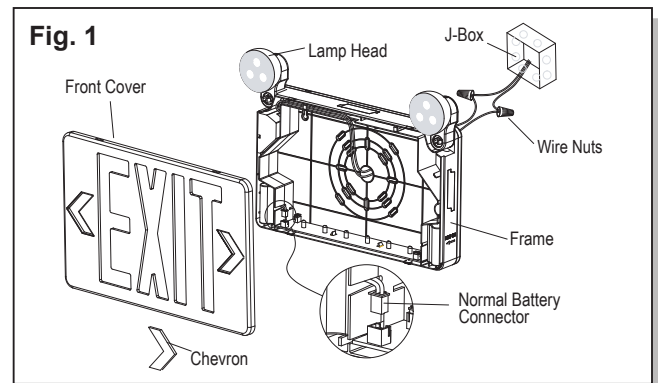
Note: Max. mounting height is 14ft

1. Remove the front cover from the enclosure and install the (2) lamp heads; see **Lamp Installation** section. (Fig. 1)
2. Remove from the backplate the center knockout and any knockouts that are needed to mount to the J-box.
3. Route wires through the center hole of the backplate.
4. Make electrical connections; see **Electrical Connections** section.
5. Secure the backplate to the J-box using appropriate hardware (provided by others).
6. Connect the remote lamp wires if the fixture is remote capable. Refer to **Remote Lamp Connection** section.
7. Plug the male battery connector(s) into the female battery connector(s) on the PCBA.
8. Remove appropriate chevrons from the front cover, as desired.
9. Snap the front cover back onto the enclosure.
10. Adjust the direction of the lamp heads for optimal lighting coverage.

Ceiling or End Mount

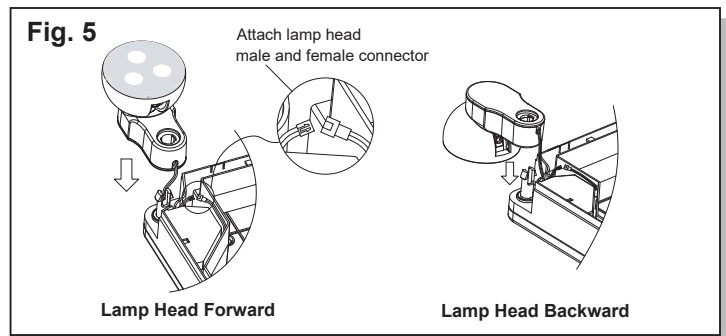
Note: Max. mounting height is 14ft

1. Secure the crossbar to the J-box, with the longer blade of the crossbar against the J-box. (Fig. 2 & 3)
2. Remove the front cover from the enclosure and install the (2) lamp heads; see **Lamp Installation** section.
3. For a double face fixture, replace the backplate with the additional faceplate provided.
4. Remove the mounting cover from the top or side of the fixture for ceiling or end mounting, respectively.
5. Install the canopy in the opening by inserting at a 20° angle, then rotating until it snaps into place. (Fig. 4)
Caution: Trying to remove the canopy after it is locked in place may cause damage.
6. Route wires through the hole in the canopy.
7. Make electrical connections; see **Electrical Connections** section.
8. Secure the canopy to the crossbar using appropriate hardware. The canopy should be securely fastened and tight against the wall.
9. Follow steps 6-10 in the **Wall Mount** section to finish installation.



Lamp Installation

1. Remove the front cover if not completed already.
2. Snap the lamp heads into place. (Fig. 5)
Note: The lamp heads can be assembled forward or backward.
3. Connect the lamp head connectors.



Electrical Connections

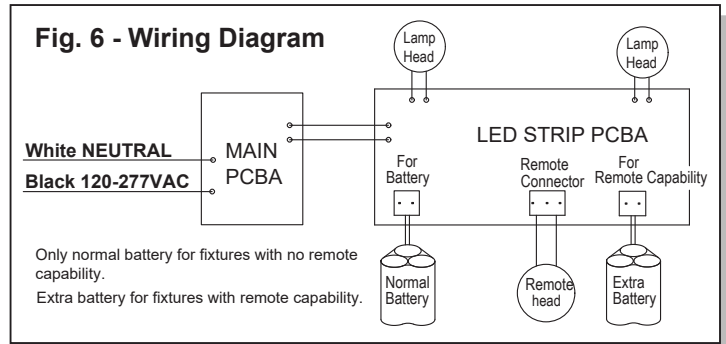
All electrical connections should be made inside the J-box. Make electrical connections as follows (Fig. 6):

120-277VAC

White - Common

Black - 120-277VAC

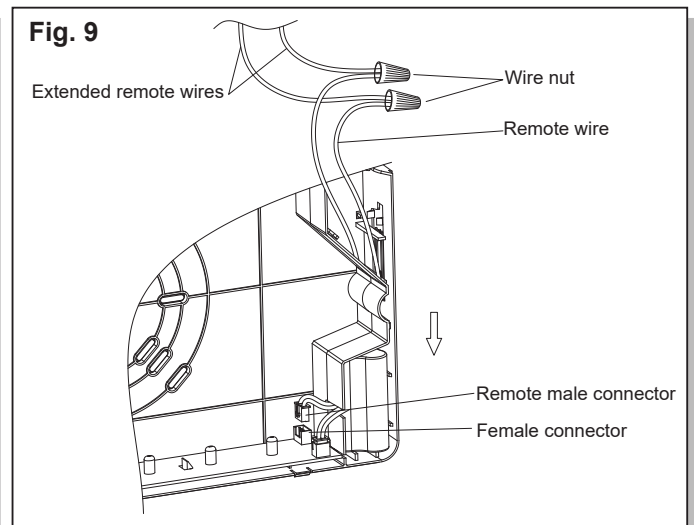
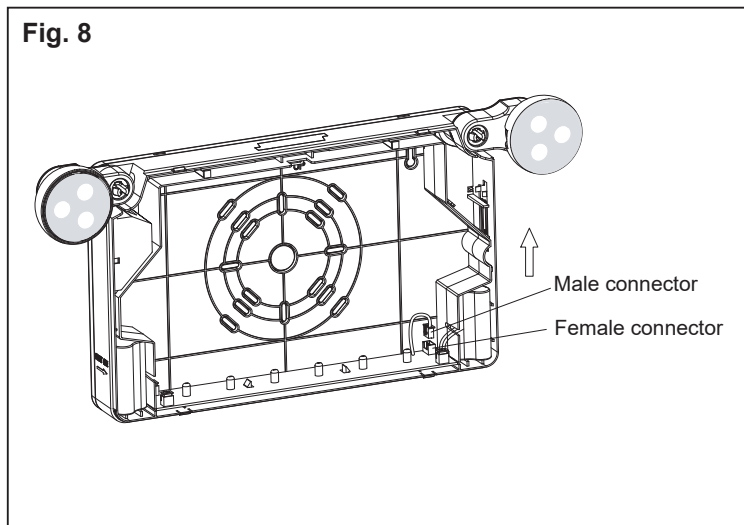
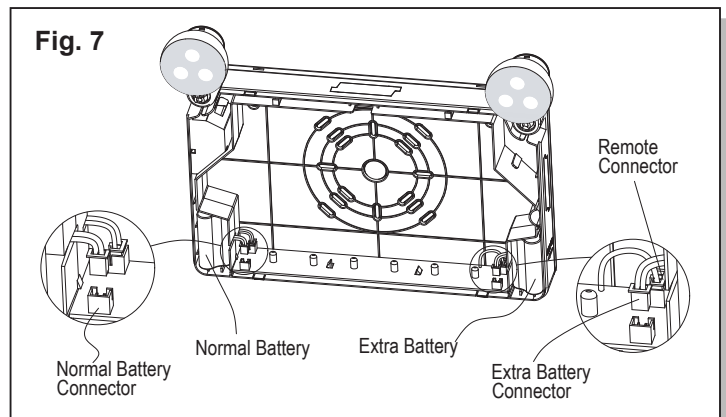
Note: Cap unused leads to prevent shorting.



Remote Lamp Connection: 3.6V, 4W

Fixtures with remote capability have an additional battery that needs to be connected. Make sure to plug the extra battery connector into the PCBA. (Fig. 7)

1. Remove the ground male connector from the female connector. (Fig. 8)
2. Plug the remote male connector into the female connector. (Fig. 9)
3. Connect extended remote head wires to the remote wires using wire nuts. Yellow is positive (+) and purple is negative (-).



Self-Test/Self-Diagnostics (G2)

Operation

The purpose of this option is to provide Self-testing and Self-diagnostic capabilities to the emergency unit. At predetermined intervals, the emergency unit will automatically switch into battery mode. Refer to the **Self-Test Feature** section below for timing details. The emergency unit will also perform various Self-diagnostic tests to determine if there are any faults. Visual signaling will alert maintenance personnel to a fault of the emergency unit electronics, battery, and/or battery charger. The circuitry continuously monitors the operating condition of the emergency unit and battery charging circuit/battery supply voltage. Refer to the **LED Indicator** section below for fault reporting details.

Self-Test Feature

- The emergency unit will automatically switch to battery mode every month for a period of 1 minute.
- The emergency unit will automatically switch to battery mode every 12 months for a period of 90 minutes.

LED Indicator

Once the unit is properly installed according to the installation instruction sheet and AC power is supplied, the unit will turn on and the Self-diagnostic test function will initiate. After this, the bi-color LED will indicate the status of the unit.

- A steady green LED indicates that normal AC power is being supplied to the emergency unit and the battery is charged.
- A blinking green LED indicates that the unit is in battery mode. Refer to the **Test Button Feature** section below for manual test details.
- A red LED indicates whenever the Self-diagnostic system has detected a fault condition. Refer to the chart below to determine the fault condition:

Red LED Indication	Unit Fault	Corrective Action
Blinking 1 Time	Battery is Disconnected	Check Battery Connection
Blinking 2 Times	Battery Failure	Check Battery Then Consult Factory
Blinking 3 Times	Charger Board Circuit Fault	Check Battery Then Consult Factory
Blinking 4 Times	Transfer Function Failure	Check Battery Then Consult Factory
Blinking 5 Times	Emergency Lamp Fault	Check Lamp Connections Then Consult Factory
Blinking 6 Times	Remote Lamp (If Equipped)	Check Remote Lamp Connections Then Consult Factory
Blinking 7 Times	EXIT Lamp Fault	Check Battery Then Consult Factory

Test Button Feature

MANUAL TEST – Pressing the test button will switch the unit into battery mode for a set amount of time. The desired length of the test is determined by the number of times the test button is pressed.

- Pressing the test button once will switch the unit into battery mode for a period of 30 seconds.
- Pressing the test button twice within 2 seconds will switch the unit into battery mode for a period of 3 minutes.
- Pressing the test button 3 times within 2 seconds will switch the unit into battery mode for a period of 30 minutes.
- Pressing the test button 4 times within 2 seconds will switch the unit into battery mode for a period of 90 minutes.

RESET – Pressing and holding the test button for 2 seconds will reset the LED to a steady green. If multiple faults are present, it may be necessary to repeat this procedure for each remaining fault indicated by the blinking red LED.

Use in accordance with local building codes.